

BIM & Pavement

CPAM Conference | March 14, 2019

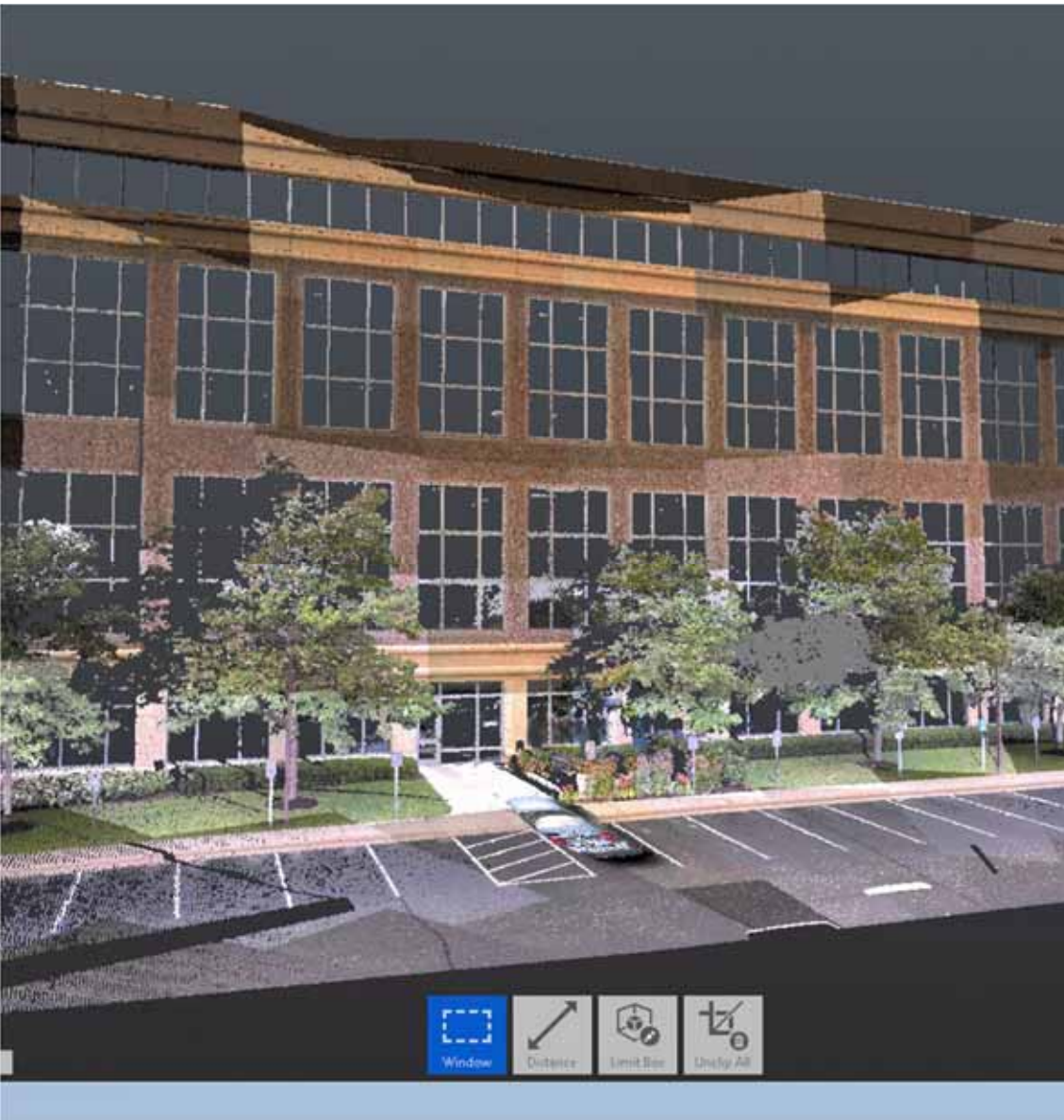
DJ Sosa, Sr. Project Manager, WSB

Kyle Klasen, Professional Land Surveyor, WSB

Mike Molitor, Engineering Specialist, WSB

A photograph of a building's roof, likely a residential or commercial structure, featuring a grid of skylights and several circular ventilation units. The roof is dark, possibly asphalt or metal, and the skylights are arranged in a regular pattern. The sky is a clear, light blue. In the top right corner, there is a white arrow icon pointing towards the top right. In the top left corner, there is a white vertical line.

What is BIM?



Current Practice Design & Construction

- Multiple users with several areas of disciplines using different methods and sources of information
- 2D Plan Sheets, Construction Notes/Logs, Specs and Quantities
- Results:
 - Issues in quality
 - Change orders
 - Inefficient

BIM Applications

- Concept Station
- Open Roads Designer
- Bentley Navigator
- Context Capture
- Pavement GIS (WSB)
- Synchro 4D





Sample Projects



Navigator (Design & Construction Review)

TH 12 Project

The screenshot displays a software interface with a 3D model of a road corridor and a summary report window. The 3D model shows a road with a centerline and shoulders, set against a dark background. A tooltip is visible over the centerline, displaying the text: "Centerline 2422.139", "Road Surface 0.0".

The summary report window, titled "Corridor Model Component Quantities Summary Report", is open in the foreground. It includes the following information:

- Report Created: Friday, March 6, 2015
- Time: 4:22:28 PM
- Corridor Name: TH12_L
- Alignment Name:
- Report Period:

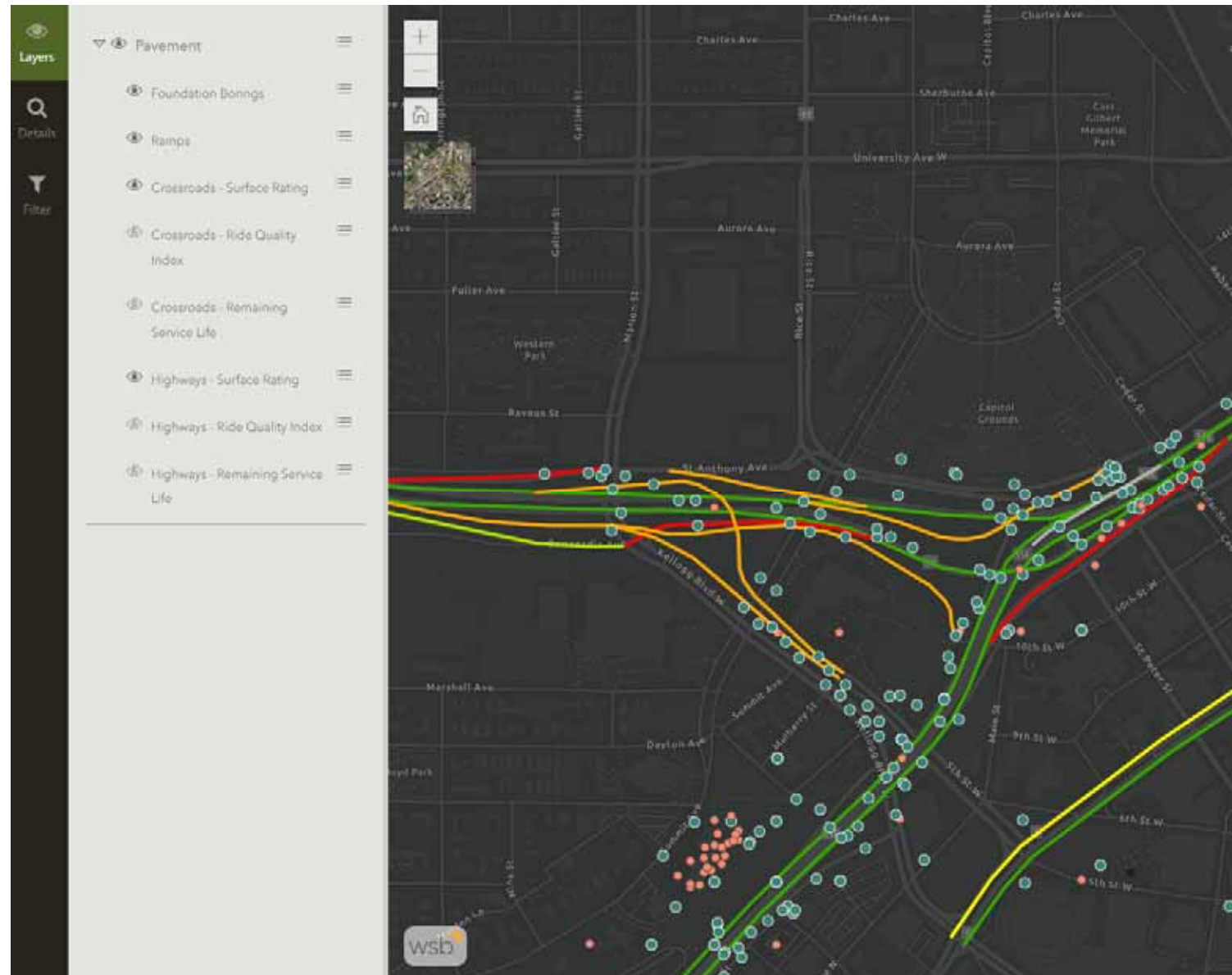
A table titled "Component Quantities Summary Report" is displayed, showing the following data:

Material	Component Volume Table	Component Surface Area Table	Unit Cost	Material Cost
Cut Volume	40275.885		0.10	\$3924.185
Fill Volume	28468.812		0.27	7686.540
Blank Asphalt/TC Asphalt	24274.764		0.00	24274.764
Blank Asphalt/TC Asphalt		60480.812		60480.812
Blank Concrete/Blank/Blank	1642.071		0.50	821.036
Blank Concrete/Blank/Blank	18243.245		0.40	7297.700
Blank Concrete/Blank/Blank	10221.545		0.40	4088.618
Blank Concrete/Blank/Blank		12078.802		12078.802
Blank Concrete/Blank/Blank	14306.285		0.50	7153.143
Blank Concrete/Blank/Blank			0.40	0.000

The report also includes a "Details" panel on the right side, which is currently empty.

Pavement GIS

WSB Database



Synchro

- Twin Ports Interchange (TPI) Project
- Synchro XR with Holo Lens (Future Application)





Questions?





THANK YOU

KYLE KLASEN

Professional Land Surveyor

WSB

320.534.5953

kklasen@wsbeng.com

DJ SOSA

Sr. Project Manager

WSB

763.762.2817

dsosa@wsbeng.com

MIKE MOLITOR

Engineering Specialist

WSB

320.534.5942

mmolitor@wsbeng.com

